

Impress Oval Counter

Product Parts

- 1 - Top
- 2 - Base
- 3 - Bottom Poles (x3)
- 4 - Top Poles (x3)
- 5 - Fabric Graphic



Display Set-Up

Step 1

Screw the bottom poles (3) into the base (2) and the top poles (4) into the underside of the top (1).

Numbers near the receptors indicate which poles go where.

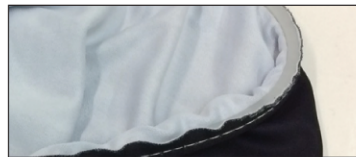


Step 2

Flip over the top and connect the poles.

Step 3

Pull the graphic (5) entirely over the top of the counter, align the zipper with the notch on the top of the counter. Feed the graphic's gasket into the top section's groove.



Step 4

Carefully set product on its side or top, on a clean surface. Feed the graphic's bottom gasket into the base's groove.



Storage & Care

Store in case, in a cool, dry location. Clean the hardware with a damp cloth.

Machine wash the Graphic cold, on gentle cycle. Air dry only, steam clean for wrinkles and never dry clean.